

H₂O Outlook

Kentucky Water & Wastewater Operators' Association, Inc.

Inside this issue:

KWWOA Conference Pictures	Page 2
KWWOA Award Winners	Page 5
Bypass Solutions	Page 7
A Message from the Chair	Page 9
Another Good One Lost	Page 10
Field Only Lab Certification- Are you Prepared?	Page 12
2015 KWWOA Training Schedule	Page 14
2015 KWWOA Membership Application	Page 15



KWWOA's Email Address has Changed

While email sent to our old address will be forwarded till the end of the year, please add our new address to your computer "Contacts" and begin using the email below immediately.

info@kwwoa.org

KWWOA State Board Addition By David Goodrum



Robin Strader was announced at the 58th Annual KWWOA Conference as the newly elected Vice-Chairwoman. She will hold this position until the spring of 2017 when she will step into the position of State Chairwoman.

Robin is a 1991 graduate of Western Kentucky University where she earned a BS in biology and chemistry with a minor in agriculture. She began her career in 1993 working at SMR Engineering and Environmental Services in Central City, Kentucky doing soils, water and wastewater analysis. In 1997, she accepted a water treatment operator position at the Leitchfield Water Works where she earned class IV water treatment and class III water distribution licenses. March 2000, she transferred to the Leitchfield Wastewater Plant as head of operations, landfarm operator, lab manager and pretreatment coordinator and earned class III wastewater treatment, class IV wastewater collection and landfarm operator licenses. She competed on Team KY in the AWWA KY/TN Section and National Top Ops from 1998 to 2004, where her team placed first in the section four times, second at nationals twice and won national champion in 2002. She also holds class IV water and class III wastewater lab analyst certifications.

Robin is a busy woman, as all who know her will attest. She has served as a member of the Kentucky Wastewater Certification Board since 2009 and is currently the Vice Chairwoman. Robin has been married to her husband, David, for 26 years and they have 3 daughters and 3 grandchildren.

While I have known Robin for many years, I posed some questions to her that I thought might be helpful to you as members:

What made you initially join KWWOA? To be quite honest, I didn't even know anything about the organization other than they had occasional training events close to home. Kevin Shaw, one of my mentors, was an officer in the Association and he would ask me to tag along to training events. I guess that's what "set the hook" and my love of the profession (water at that time) and

desire to learn more about it, did the "reeling in" so to speak.

What officer positions have you held at the local and state level? My first Chapter office was "Director of Wastewater" for the Central Chapter in 2000. Julia Thurman, another mentor of mine, asked if I would be interested in serving as an officer. I had no idea what "Director of Wastewater" was at the time, which is actually in charge of putting together the wastewater training for the chapter, but I told her I would give it a go and was elected to the position.

My next office was Secretary of the Central Chapter. At that time, we did not have a state level Member Services Director, so this position had to solicit and manage the membership for the Chapter, take the minutes and maintain our records. When I started, my records came with a roll-a-dex for the membership. Thank goodness we have evolved beyond that!

In 2005, I took a step back from the organization, when my Mom got hurt, and just served as member for a few years.

My first state position was Kentucky Lab Analyst Coordinator. I stepped in after Kim Davis retired from the position and conducted my first Lab Analyst school in the spring of 2011. This position is a pretty natural spot for me because of my degree, commercial lab analyst, water and wastewater treatment experience. Giving that role up, during my time as KWWOA State Chairwoman, is going to be hard, as I am passionate about this program.

I picked up the Central Wastewater Rep spot when Gary Crabtree resigned the position. The reps from each Chapter help guide the direction of the Association and serve as a conduit of information to and from the members to the State Board.

In 2012, I was elected as the Central Chapter VP and in 2014 was elected as the President. State Vice Chairwoman, is my first elected State office.

How has being a KWWOA member helped you as an individual/operator? Being a KWWOA member has allowed me to attend training on new and

Article continued on Page 8

58th Annual Water & Wastewater Operators Conference

Caution: KWWOA Operators at Work

A special "thank you" to all who attended, spoke, worked, exhibited and/or sponsored this event. This Conference, as well as all KWWOA events, is a collaborative effort, conducted strictly to benefit Kentucky's drinking water & wastewater system operators, and ultimately the citizens of the Commonwealth.



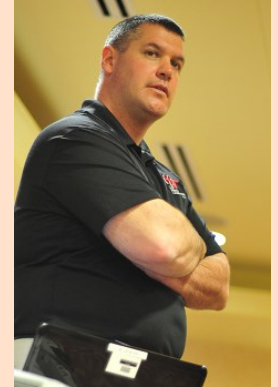
In-coming Chairman, David Goodrum, presents a plaque to Shaun Youravich, for serving as KWWOA's Chairman (aka Fearless Leader).



Jeff McIntyre, W. Virginia American Water, served as opening speaker for the Conference.



Rodney Ripberger, DOW, shared tools for preparing Consumer Confidence Reports.



Brandon Leeth, H P Thompson, shares lessons learned during the Hillsboro WWTP upgrade.



Tom Gabbard, newly appointed Asst. Director of the Division of Water, shared KY's response to the West Virginia, Elk River Spill.



Darren Dennison, Dwight French and Brandt Cashion talk shop in the Exhibit Hall.



Blackjack anyone???



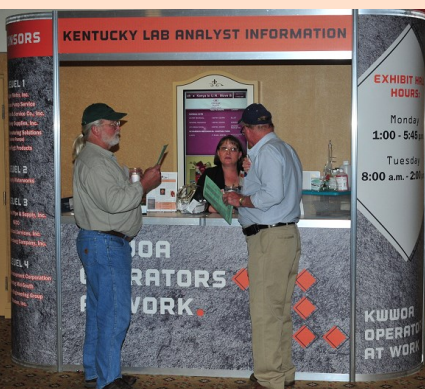
Julie, does your trainer know you are eating that Ice-cream?



Jim Collins, Brenntag Mid-South, conducts an industrial wastewater class.



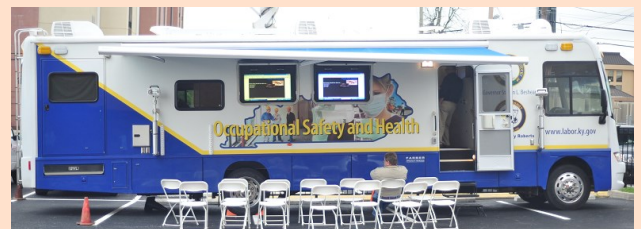
Bob Cashion, S4 Water, speaks with Scavenger Hunt participants.



Robin Strader doing what she does best, pushing membership in the KWWOA & KLA.



Alan Todd (otherwise known as Blake Shelton) & Stewart North. Are they talking wastewater or their favorite beverage?



The KY Dept. of Labor shared with us their "party bus", otherwise known as the IMPACT vehicle. This vehicle is available to bring safety and health training to your workplace or event.

KWWOA Wishes to Thank Our Conference Sponsors:

Level I

Badger Meter, Inc.
Buchanan Pump Service
Guthrie Sales & Service Company, Inc.
Jack Doheny Supplies, Inc.
Xylem Dewatering Solutions
Xylem-Flygt Products

Level II

HD Supply Waterworks

Level III



LEVEL IV Sponsor for the 58th Annual KWWOA Conference

Dedicated

Committed, devoted, single-minded, zealous, focused, determined, relentless, passionate, persistent, obsessive.

American Development Corporation is **dedicated** to providing Water and Wastewater plants with chemical solutions for their specific treatment needs. The fact is, it's all we do, and we've been doing it since 1996.

Our process starts with understanding a facility's needs and requirements. Jar testing, raw/finished water analysis and current chemical usage are part of our complete plant evaluation. Once the optimum chemicals and feed systems are selected, our "mini bulk" system is installed. The system's components are based on daily feed requirements along with operator preference.

ADC's trucks deliver all of the chemicals to a treatment plant in one stop. Deliveries can be scheduled to keep the chemicals at a pre-set level determined by the facility operator or we will keep the system topped off using our chemical usage tracking system.

ADC does not charge deposits or have delivery or fuel service charges.

That's not where ADC's commitment to our customer ends; it's just the beginning.

Service and Support

ADC offers 24/7 service and support.

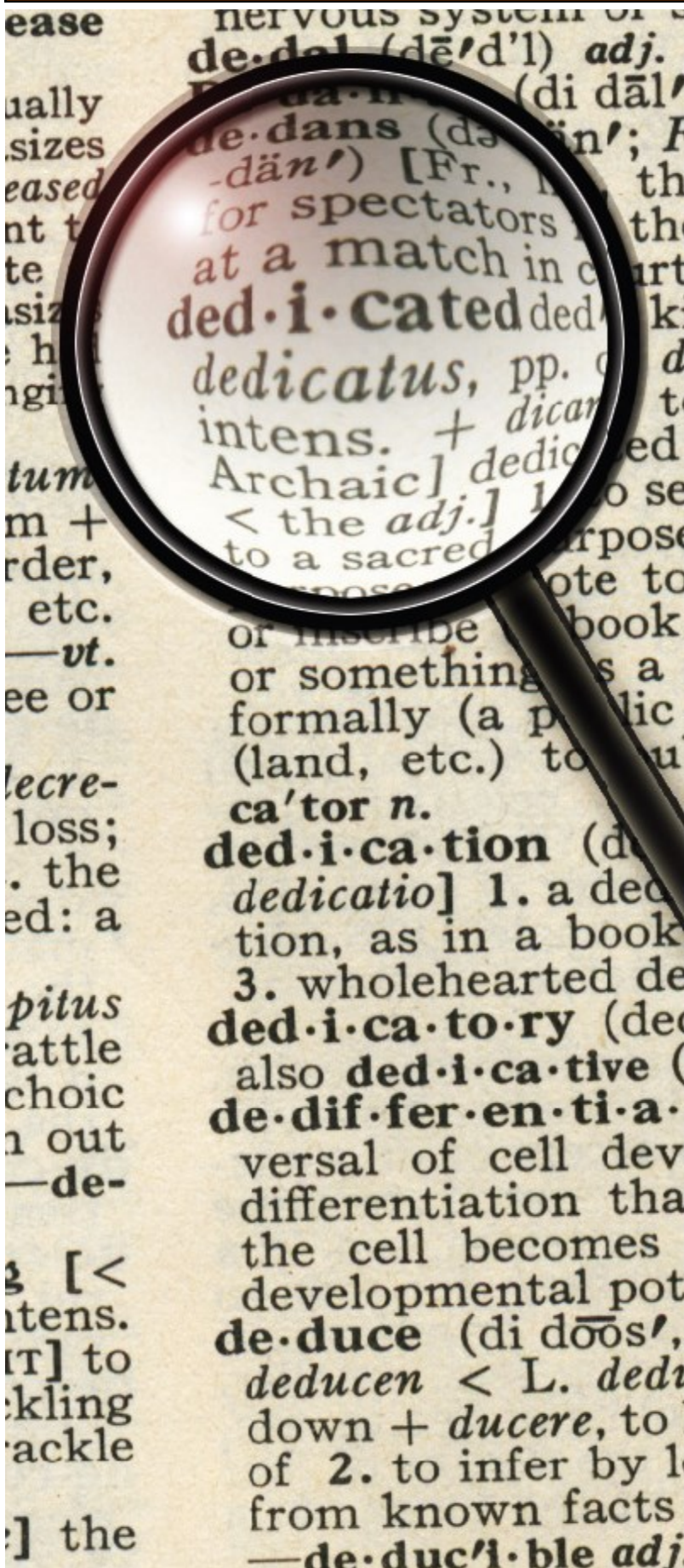
This includes emergency delivery of chemicals and parts. Parts ordered during normal business hours are shipped on the same day via UPS. Overnight delivery is available if needed.

We understand that treating water and wastewater is an ever changing process. The chemical feed rates that work today might not work tomorrow. Our support team is available 24/7 to assist treatment facility operators when problems arise.

American Development Corporation

888-542-8561

www.adc-chem.com



2015 KWWOA Conference Award Winners

Outstanding Water Treatment Plant

Moss Water Plant — Hopkinsville Water Environment Authority



Award presented by Shaun Youravich and
accepted by Nikki Chambers

Outstanding Wastewater Treatment Plant

Hinkston Creek Wastewater Treatment Plant - City of Mt. Sterling



Award presented by Shaun Youravich and accepted
by Bobby Lykins and Rick Fletcher

Earl T. Mitchell Award

Curt Pickerell

Hardin County Water District No. 1



Award presented by Shaun Youravich and accepted
by Philip Clark on behalf of Mr. Pickerell

J. C. Chambers Award

Melissa Partin

Corbin City Utilities



Award presented by Shaun Youravich and accepted
by David Dodd on behalf of Ms. Partin

Eugene Nicholas Award

John Thomas

Hardin County Water District No. 1

Award Presented by
Shaun Youravich and accepted by
Daniel Clifford posthumously for Mr. Thomas



LEVEL IV Sponsor for the 58th Annual KWWOA Conference



SALES with the customer's needs
always in mind!

With WASCON's experience in the water and wastewater industry, WASCON can help the **PROFESSIONAL ENGINEER** select the best equipment for their client's application. By selecting the right equipment, engineers can rest assured knowing their client's equipment will operate worry-free for many years. WASCON's sales staff has the ability to help guide the project designer through the design project by making product recommendations, preliminary product sizing and pricing, providing product specific drawings and specifications. WASCON also has the capability of talking to your client about the specifics products chosen for their application and make them feel comfortable with that selection.

Once the product has been designed, installed and operational there will come a time the equipment will need to be replaced. Our aftermarket sales team can help the **UTILITY CUSTOMER** identify equipment problems and recommend equipment with a newer design or equipment just better suited for the application. By replacing aging mechanical equipment, the utility customer will be able to reduce the overall system operation and maintenance cost.

Brands offered by WASCON

EOne	Grundfos	Yeomans	Chicago	Morris
Peerless	Sewer Chewer	PACO	High Tide Technologies	USEMCO
AMETEK	Singer Valve	Myers	WEMCO	Red Valve
Tideflex	Pioneer Pump			

CONTACT Phone (931) 823-1388
www.wasconinc.com

Scan the QR Code to Download the WASCON Smartphone App



WASCON
SALES and SERVICE

Sales / Service / Rental



By-Pass Solutions Utilizing Pioneer Pump and High Tide Technologies

By David K. Pine, P.E., Wascon, Inc.

The Milcrofton Utility District, located in Eastern Williamson County, Tennessee, provides clean drinking water to over 6,700 customers. The utility district maintains over 232 miles of water mains, 13 water storage tanks and 10 water pumping stations. Due to the dramatic population growth in this area of Williamson County, the Milcrofton Utility District is constantly looking for ways to keep up with the growing water usage demand.

The Avalon Water Booster Station pumps to a water storage tank that serves approximately 400 homes. Due to growth in the area and irrigation usage during the summer months, the existing pumps at the Avalon Water Booster station became undersized. Milcrofton Utility District determined that the existing skid mounted water booster pumps needed to be replaced.

The challenge was how to maintain water service to the Avalon area during the installation of the new pumps. The by-pass pump would be required to meet the design condition provided by the Utility (500 gpm at 323' TDH) during the 30-day construction period. The by-pass pump also had to be automatically controlled by a telemetry system to ensure that the Avalon water storage tank would fill and drain appropriately.

WASCON, Inc. was asked by Milcrofton Utility District to provide a proposal for the by-pass pump. Representing both Pioneer Pump and High Tide Technologies, WASCON, Inc. was up to the challenge.

After reviewing the hydraulic conditions, a 6x4 diesel driven standard centrifugal Pioneer Pump (PP64S17) was selected. This pump was fitted with a LOFA control panel ideal for pairing with the High Tide (HTT-1100) telemetry system. High Tide Technologies, based in Nashville, TN, is a technology company that enables users to create a complete SCADA solution utilizing field units, satellite, cellular or Ethernet communications as well as the internet to monitor and provide automatic control. High Tide also offers a web-based software called TelemetryVIEW so the user can view data and initiate manual controls from any internet-connected computer or mobile device.

For the Milcrofton project, a High Tide HTT-1100 unit was installed at the Avalon Tank and a HTT-1100 unit was installed on the Pioneer bypass pump located at the Avalon booster station. The set points for when the pioneer pump would turn "on" and "off" were determined and programmed in the High Tide SCADA system. On the day construction began, power to the existing pump station was turned off and the Pioneer by-pass pump started up and met the demand without issue. The High Tide telemetry system controlled the by-pass pump flawlessly. The HTT-1100 unit at the tank, monitored the water elevation in the tank and would automatically control the operation of the Pioneer pump.

One of the benefits of High Tide Technologies is the ability for customization. For instance, after one week of operation, a local resident requested that operation of the diesel driven by-pass pump be limited during night hours. David Mundie, president of High Tide Technologies, was notified of this request and after a simple programming modification and the installation of a relay at the HTT-1100 unit at the bypass pump, the Pioneer pump would no longer operate during the hours of 11 p.m. – 7 a.m. unless manually over-ridden by the user.

Milcrofton Utility District also had access to the TelemetryVIEW web-site which allowed them to view the status, run times, suction/discharge pressure and tank elevation from any internet connected computer or mobile device, as well as control the operation of the by-pass pump.

According to Mike Jones, General Manager of Milcrofton Utility District, "High Tide Technologies is user friendly, has customizable features, and a very fast field response time over our existing radio system. The Pioneer pump was perfect. The head pressure we had required a "serious" pump and the experience of Wascon, partnered with Pioneer Pumps and High Tide Technologies was a perfect combination.

For more information on Pioneer Pump or High Tide Technologies, please contact WASCON, Inc. at 931-823-1388.



Pioneer pump (PP64S17) fitted with High Tide Telemetry

Message from the Chair By David Goodrum



I hope that all KWWOA members are having a great summer! I am settling into the roll of KWWOA Chairman and "retiree", but it has been a joy so far. As many retirees find, it seems like I have more on my plate now that when I was actually working a full time job.

While I have been in the business for many years and have had the pleasure of meeting many of KWWOA's members across the state, I thought it only fair that I should answer the same questions I posed to Robin Strader.

What made you initially join KWWOA? In November 1979, I was hired at the Glasgow Water Company. The Central Chapter Christmas supper was in December and I was asked to go with my Boss, Mr. Herbert Pursley. He signed me up to be a member at the supper. The Glasgow Water Company has always been a supporter of KWWOA and was good enough to pay all of its operators' dues each year.

What officer positions have you held at the local and state level? I have been the Director of Water, Vice-President and President of the Central Chapter. This is my first office at the State Level. Last September, all the Chapters attended a KWWOA Strategic Planning meeting with the State Board. It was around this time that the Chairman elect had notified the Board, that due to reasons beyond his control, he could not serve out his term. We were brainstorming possible candidates to step into this position and Shaun Youravich, the Chairman at the time, asked me if I would consider serving out the remainder of the term. (If an officer has to step down from an elected position, the KWWOA Bylaws allow the State Board to appoint someone to fill position for the remainder of the term.) I considered it a great honor to be asked and to serve an organization that I have been a part of for 35 years.

How has being a KWWOA member helped you as an individual/operator? I have met and made friends with KWWOA members all over the Commonwealth and any time you can make a new friend

you have had a good day. As an operator, the opportunity to share ideas and brainstorm with other operators about problems you may be having with your plant, is more valuable than any training that you may receive in a class room.

Has being a KWWOA Officer, benefited you as an operator? If so, how? Yes, the ability to find out what topics the operators of the Commonwealth want to be instructed on, allows me to understand the water throughout the State and learn solutions for problems I have not encountered yet at my plant.

As Chairperson, what are your goals for the organization? As Chairperson, my goal is to encourage every operator in the Commonwealth to be a member of the only organization that "belongs" to the operators. The KWWOA is for the brother and sister operators across the State and the benefits that they receive far outweigh the cost of membership. I also want to say that without the support of our Associate Members and other vendors, that our training cost would be much higher. I am so thankful for the many sponsors that we have and want them to know how much we appreciate their support of our industry and Association! We need to keep this in mind and support them in return when we can.

I want to remind the **North Central** and **Western** Kentucky members that this is an election year for your Chapters. If you are interested in getting more involved in your Association, I encourage you to contact your respective Chapter Officers (contact information may be found at www.kwwoa.org) to see what positions will be available and/or how you might help with Chapter functions. The website also contains SOPs which outline the duties assigned to each position. I guarantee that if you volunteer, your help will be greatly appreciated!

I look forward to working with each of you over the next two years. If we have not met, make sure and seek me out at a KWWOA function and introduce yourself!

DELANEY & ASSOCIATES, INC.

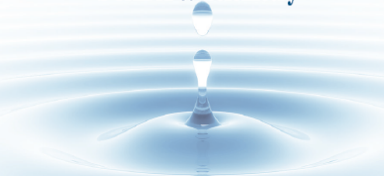
Serving Kentucky and Ohio since 1984

Water & Wastewater Treatment

**Potable Water Distribution
& Wastewater Collection**

CSO/SSO Management & Abatement

SCADA & Telemetry



(859) 342-4944

www.delaneyandassociatesinc.com

KWWOA State Board Addition Continued

existing technologies, regulations and products. Networking is a major benefit of membership. I am a firm believer that as much training goes on in the hall during training events as in the classroom. As with anything, you get out what you put in. Learning is not done by osmosis. It requires effort on the part of the operator and the Association.

Has being a KWWOA Officer, benefited you as an operator? If so, how? Being an officer in KWWOA benefits me in that I am able to have an impact on the training that KWWOA provides.

As the Vice-Chairperson and ultimately the Chairperson of KWWOA, what are your goals for the organization? First of all, I would like to thank everyone who took the time to vote for me. During my tenure as Vice-Chairperson and Chairperson, I want to get the word out to everybody involved in the environmental field about KWWOA. When I started calling around talking about "Field Only Wastewater Lab Certification", I was amazed how many utilities had no clue what KWWOA was and thought the "Division of Water" put on the KWWOA state conference. Another objective is to expand training locations beyond the "normal spots" Chapters use. I want our new generation of operators to "Catch Fire" for the profession and not just settle for going to work and getting continuing education hours. Lastly, I want to reiterate "you can't get out more than you put in". This is your Association, take advantage of all we have to offer.

I believe that with the membership's help and a leader like Robin, the future of our organization is bright!

LEVEL IV Sponsor for the 58th Annual KWWOA Conference

**"WE ARE KENTUCKY PEOPLE
SERVING KENTUCKIANS"**



**PROUDLY SUPPORTING KENTUCKY WATER AND
WASTEWATER OPERATORS ASSOCIATION**

Kentucky Engineering Group, PLLC was founded in 2009 as a professional limited liability company located in the heart of the Bluegrass. Our team has over 140 years of combined experience in rural utility engineering. Our focus is on assisting rural municipalities and utility districts with capital improvement projects, system expansions and improvements and compliance with regulatory agencies.

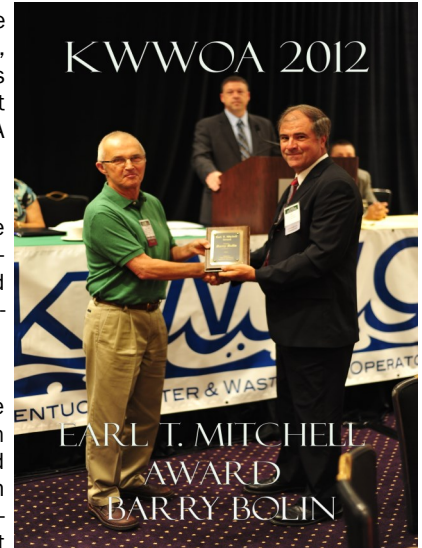
Dedicated and Committed to providing the best possible quality and service to you and your community.

KWWOA Has Lost Another Great One!

Barry Lee Bolin, passed away May 16th, 2015, in Paducah, KY, after a 7-year, hard fought battle with multiple myeloma. Barry was the Distribution Superintendent at Paducah Water Company, where he worked for almost 21 years. He was well respected by his colleagues and peers and was a valued, longstanding member of the Kentucky Board of Certification of Drinking Water Treatment & Distribution System Operators. Barry was also a 25-year member and supporter of KWWOA and was awarded the prestigious Earl T. Mitchell award in 2012.

Barry was a native of Clinton, KY and graduated from Hickman County High School in 1964. He then attended the University of Kentucky, where he studied Agronomy and was a cadet in the University of Kentucky Army ROTC program. He was commissioned as a 2nd Lieutenant in the United States Army upon graduating with a Bachelor of Science degree in 1968. He served a 2-year, active-duty commitment and was honorably discharged in 1971.

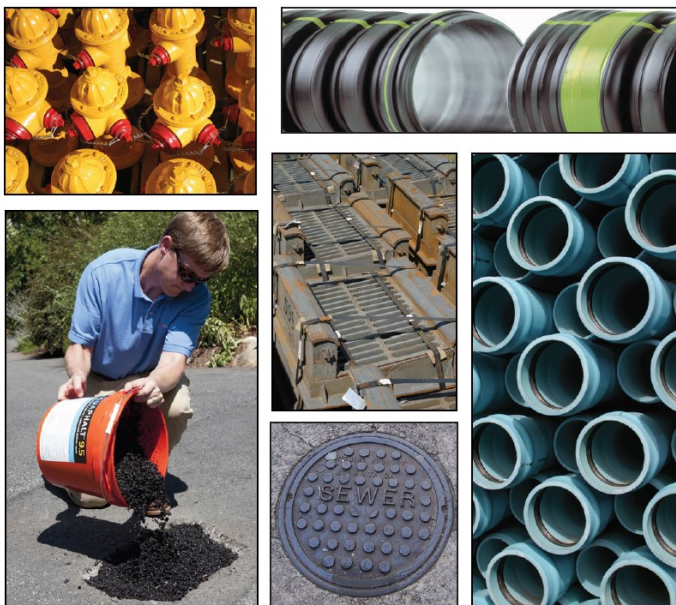
After serving his country, Barry worked in several different jobs before returning to Clinton in the summer of 1980, to help with the family business and care for his ill father. Barry took a position with the City of Grand Rivers, KY in 1988 where he was first introduced to water treatment and distribution by Mr. Randell O'Bryan. Barry had found his true calling and then took a position with the North Marshall Water District in 1991. In 1994, Barry was hired by the Paducah Water Company and rose through the ranks, from a laborer position to Assistant Distribution Superintendent within six months. Barry was later promoted to Distribution Superintendent and worked tirelessly with his team at Paducah Water, Mr. James Grimm, Mr. Darran Rankin, Mr. Scott Shrum, and Mr. Glen Anderson, to improve the operation and quality of water service provided to the Paducah-McCracken County area.



Barry receiving the 2012 Earl T. Mitchell Award from Chairman Dave Enzweiler.

Mr. Bolin is survived by his wife of almost 32 years, Mrs. Jacky Bolin; two sons, Dr. Levi Bolin and Wesley Bolin. In addition to his support of KWWOA, Barry was actively involved in Boy Scouting with the former Troop 22, where both of his sons achieved the rank of Eagle Scout. Barry most loved spending time with his family and pets, listening to music, and playing golf with his friends. KWWOA, as well as operators across the state, will miss Barry's friendship, active support and dedication to the operator profession!

Large enough to serve you...



...small enough to care.

FORTILINE
WATERWORKS



Paducah (270) 443-1759
Hartford (270) 298-4545
www.fortiline.com

KWWOA Sponsorship Opportunities

The Central Chapter will have a Golf Scramble on September 22, 2015, during their Fall Conference at Barren River State Resort Park. The event begins at 10:00 a.m. CST, with a shotgun start. The cost for each golfer is \$60 and includes a cookout at the conclusion of the Scramble. Hole Sponsorships are available as well for \$150 which includes one golfer and the cookout. Prizes will be awarded to the 1st, 2nd & 3rd place teams.

The North Central/Eastern Fall Conference will be held October 12-14, 2015, at the Four Points by Sheraton in Lexington. An exhibit show will be held on October 13 and booths are \$150. Each vendor that participates may also elect to speak during the vendor roundtable held the afternoon of the show.

If you are interested in registering for these events, log into your account on the KWWOA website, www.kwwoa.org. Training is listed on the "Register for Training" tab and the other events may be found on the "Sponsor KWWOA" tab.



RESOURCE MANAGEMENT

103 Fieldview Drive
Versailles, KY 40383

(859) 873 - 3331 Office
(859) 983 - 6217 Cell

Contact:
Todd Stephens or Mark McFarland

Visit Our Website At
www.haresource.net

- Mobile Belt Press Dewatering
- Lagoon Cleaning
- Digester/Tank Cleaning
- Dredging
- Land Application
- Permitting/Reporting
- Sampling/Analysis
- Belt Press Sales/Rental

LEVEL IV Sponsor for the 58th Annual KWWOA Conference**SHARED VALUES – SHARED SUCCESS**

Brenntag Water Additives is a leading North American marketing and sales channel offering the broadest product range together with pro-active, customer oriented expertise.

Making the Supply Chain Simpler
Treating water can involve complex and critical decisions. Brenntag Water Additives helps make those decisions easier by providing the highest quality chemicals, services, attention to safety, and a commitment to meeting our customers varying needs. Simplify your product sourcing with Brenntag as your partner for Phosphonates, Biocides, Dispersants, Corrosion Inhibitors,

Flocculants, Coagulants, Defoamers, Polyphosphates, Amines, Acids and Alkalies.

Contributing to a Better Environment

Brenntag Water Additives provides a wide range of chemistries, including environmentally friendly treatment products to promote care of the earth's most precious resource, water.

Collaboration and Commitment to Customer Relationships

One of Brenntag Water Additives' key values is open and transparent collaboration with customers and suppliers. Experienced and dedicated industry specialists

apply knowledge from Brenntag's worldwide relationships to meet local customer needs.

Always a Step Ahead

Brenntag Water Additives provides dedicated logistics solutions for the particular needs of water treatment customers, assuring traceability, quality and regulatory compliance.

Water is Life –

That's Why We Care

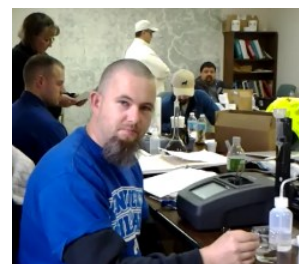
Brenntag Mid-South, Inc.
4510 Gilbertsville Road
Calvert City, KY 42029
Phone 800-876-6248
www.brenntagmid-south.com

Field Only Lab Certification—Are you prepared?

Over the past few years, KWWOA has partnered with the Division of Water (DOW) to get the word out on the new wastewater lab requirements. This includes systems that collect, analyze field samples and report this information on KPDES Discharge Monitoring Reports. With the October 1, 2015 certification deadline rapidly approaching, the Kentucky Lab Analyst Committee (aka Robin Strader) began offering classes to help systems prepare their field only wastewater laboratory applications. During this training, a system actually completes a majority of the documents and samples that have to be submitted to DOW for approval and then only has to secure the necessary local signatures.

This is not a “we tell you what to do when you get back to work” class. Everyone has to bring a laptop and be prepared to work. Once in class, everyone is provided with a thumb drive and binder containing document templates derived by the DOW, as well as forms created by KLA to help capture additional information when certification is achieved. Attendees actually complete the application for certification, method analyte list, standard operating procedures and quality assurance plans.

On the second day, everyone is asked to bring the instruments they utilize for analyzing samples. The agenda for this day varies to meet the needs of the attendees and the parameters for which they report (i.e. for coal mine samplers we have substituted conductivity rather than chlorine). Everyone is provided with a set of 4, 7, and 10 pH buffers for their pH meter. After every unit is calibrated, quality control samples are provided to check the accuracy of the probe and Robin checks the temperature reading against a certified thermometer, before their proficiency test sample is analyzed. The instrument check is the same for dissolved oxygen. For chlorine, the unit's calibration is verified, a standard is provided to run and check for accuracy, and then the proficiency test sample is conducted. Systems that test for conductivity, are asked to bring their own calibration standards and check standard, but KLA secures the proficiency test sample. Proficiency test samples are like a DMR QA study sample. It is a sample prepared by a provider for which the true value is not known. Robin sends the results for each system to the provider and they grade it as acceptable or not acceptable. Once the graded report on the proficiency test samples is returned (approximately 5 days) and included in the application, it can be submitted to DOW. In addition, each attendee leaves with the knowledge and glassware needed to complete proficiency test samples for years to come and earns a maximum of 16 hours of CEU credit for their water and/or wastewater license for renewal purposes (credit is based on actual class hours attended).



Gamaliel Operator, John Moore, performs a low level chlorine analysis.

The brain child and driver behind this class is Robin Strader. Some would ask why, with a full-time job as the Leitchfield Wastewater Treatment Plant (WWTP) Head Operator, an active family and 48 cows to milk twice a day, she would elect to write a class, publicize it, secure locations, purchase and secure the necessary supplies and coerce volunteers to help conduct 10 classes from January to October? When asked this question, Robin replied, “Many times we let fear rule our lives, both at home and work. I guess I just do not have enough “sense” to be afraid. As the oldest of four children, I learned to “just do it” long before Nike made the phrase popular. I never questioned whether the Leitchfield WWTP Lab would get certified or not, we just did it because it was a financially sound decision and allows for quicker results for process control decisions.”

“Going through the process, however, I began to think that with the newness of the regulatory requirements, that it might scare off some operators who have always collected and analyzed their samples. By September 2014, the wheels in my brain were turning. The good thing about milking cows is your hands are busy, but your mind has time to roam. While in the barn, I started jotting down the process and the resources needed. My goal was to ultimately break down what some would consider an ominous task, into bite size pieces. By December 2014, my notes had gelled to form a class which I discussed with DOW and a CEU application was submitted to DCA for review.”

By January 2015, Robin had her troops assembled and started conducting classes. The response to this voluntary training course has been amazing, growing from two classes to ten. So far, KLA has helped to prepare 73 field only lab certification packages and 110 people have earned nearly 1400 hours of continuing education hours. Of the applications submitted, all have been approved.

Robin acknowledged it wasn't easy to add these classes to an otherwise busy life, but she wouldn't have it any other way. She has benefited just as much as the folks she has met travelling across this great state, such as Jerry Basham, from the Henderson Water Utility. Jerry issued a big thank you to Robin and said, “This class is a must for those small plants that are looking at this requirement and wondering what to do. Every step, paperwork and PT Study is explained and worked up so the application will nearly be complete by the end of the workshop. I encourage you to seek this course out, if you are curious and in need of lab certification assistance.”

So there you have it. If you are concerned about continuing to collect DMR required samples and becoming a field only certified lab, take the plunge! You have four more classes to select from before the certification deadline arrives:

London - July 23-24, 2015
Mayfield - August 24-25, 2015

Berea - August 12-13, 2015
Leitchfield - September 17-18, 2015

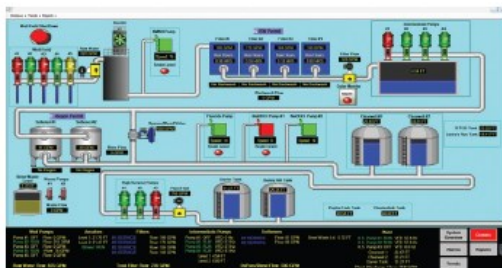
Class sizes are limited and preregistration is required! To register, log into your KWWOA account at www.kwwoa.org, and click on the “Register for Training” link. Each class has three options available. If you are doing filter backwash samples or are in a chlorinated wastewater plant, sign up for the pH, DO and chlorine class. If you are doing storm water or in a non-chlorinated (i.e. UV) wastewater plant, select the pH only option. If you want more than one person to attend from the same facility, sign the second person up for the CEU only option. The CEU option does not include all of the supplies, but allows more than one person to be exposed to the regulatory requirements.

There you have it. What are you waiting for? Register now!



YOU WOULDN'T USE 90S
TECHNOLOGY FOR
YOUR PHONE; SO, WHY
WOULD YOU USE IT FOR
YOUR TELEMETRY?

IS IT TIME TO UPGRADE?



Typical SCADA Screen



RUG3 RTU

- SCADA & telemetry
- Remote cellular, VHF/UHF radio monitoring
- 24x7 alarm notification

 **Control**
TECHNICAL SOLUTIONS, LLC

For more information call (513) 314-5846 or visit incontroltechsolutions.com.

KWWOA 2015 TRAINING & EVENT SCHEDULE

Chapter	Date	Training Cost	Location of Training	Type of Training*	Hours*
KLA	July 7–8	Varies as this class includes 3 different class components from which to select. Refer to www.kwwoa.org for class descriptions.	Hopkinsville Water Env. Authority Hopkinsville, KY	Field Only Lab Certification Application Preparation— Water and Wastewater**	12
North Central	July 14	Free—KWWOA Members \$50.00—Non-Members	Maysville Community College Maysville, KY	Drinking Water	6
KLA	July 23–24	Varies as this class includes 3 different class components from which to select. Refer to www.kwwoa.org for class descriptions.	London Wastewater Plant London, KY	Field Only Lab Certification Application Preparation— Water and Wastewater**	12
KLA	Aug. 12–13	Varies as this class includes 3 different class components from which to select. Refer to www.kwwoa.org for class descriptions.	Russell Action Folk Center Berea, KY	Field Only Lab Certification Application Preparation— Water and Wastewater**	12
Eastern	August 20	Free—KWWOA Members \$50.00—Non-Members	Morehead Utility Maintenance Dept. Morehead, KY	Water and Wastewater	6
KLA	Aug. 24–25	Varies as this class includes 3 different class components from which to select. Refer to www.kwwoa.org for class descriptions.	Purchase Area Development District Mayfield, KY	Field Only Lab Certification Application Preparation— Water and Wastewater**	12
KLA	Sept. 1–4	150.00–All attendees Must be preapproved.	Grayson County Water District Leitchfield, KY	Sept. 1-3—Cert. Review Session Sept. 4—Exam**	18
KLA	Sept. 17–18	Varies as this class includes 3 different class components from which to select. Refer to www.kwwoa.org for class descriptions.	Grayson County Extension Office Leitchfield, KY	Field Only Lab Certification Application Preparation— Water and Wastewater**	12
Central	Sept. 22-23	Free—KWWOA Members \$50.00—Non-Members	Barren River State Resort Park Glasgow, KY	Water and Wastewater	12
North Central & Eastern	Oct. 12-14	Free—KWWOA Members \$75.00—Non-Members	4 Point Sheraton Lexington, KY	Water and Wastewater	18
Central	October 22	Free—KWWOA Members \$50.00—Non-Members	Bowling Green Municipal Utility Bowling Green, KY	Confined Space	6
Central	December 3	Free-KWWOA Members	The Whistle Stop Glendale, KY	Holiday Awards Banquet	N/A
Western	December 7	Free-KWWOA Members	KY Dam Village State Resort Park Gilbertsville, KY	Holiday Dinner Meeting	N/A

* It is the intent of the KWWOA to solicit approval from the Division of Compliance Assistance and the Kentucky Boards of Certification for approval of the hours and type of training referenced above prior to the class. If the class has not already been approved, a notice will be posted on the KWWOA website once approval is received. If you need these hours for renewal purposes and/or the specific topic referenced, you should inquire ahead of time as to the agenda and whether approval has been obtained.

** Pre-approval is required for this class.



"Working Together to Preserve the Environment and Future of the Water and Wastewater Operator"



Membership Application/Renewal Form

—Please check the appropriate boxes and print clearly—

Refer to the list of counties on our website at www.kwwoa.org, to determine which Chapter serves your area.

☐ - Western

☐ - Central

☐ - North Central

☐ - Eastern

☐ - New Member

☐ - Membership Renewal

Name: _____ Agency Interest No. _____

Home Address: _____ County: _____

City: _____ State: _____ Zip Code: _____

Employed By: _____

Business Address: _____

City: _____ State: _____ Zip Code: _____

Phone: (Home) (_____) _____ - _____ (Business) (_____) _____ - _____

Email: (Home or Business) _____

Where would you prefer to receive KWWOA information/training announcements ? ☐ - Home ☐ - Business

If a valid email is provided, it will be utilized to ensure that you receive KWWOA information more quickly

NOTE: Associate Members should not use this form. Associate Membership Applications may be found at www.kwwoa.org.

Active Membership ☐ - **Postmarked after March 1, 2015**\$50.00

Active membership is designed for those who actually hold a valid water or wastewater license and/or who are employed in a water or wastewater utility. This includes administrative staff, pretreatment and/or lab technicians as well.

☐ **Honorary Membership**.....Free

Honorary membership is designed for those who are retired from the water or wastewater field and held an active membership in the KWWOA during the previous calendar year. There is no fee for Honorary membership.

☐ **KLA Membership**.....\$10.00

This fee is in addition of the Active Membership fee above.

TOTAL _____

Please forward this application and a check or money order, payable to **KWWOA**, to the address below. You may also elect to renew online, paying through PayPal at www.kwwoa.org.

KWWOA
P.O. Box 700
Lawrenceburg, KY 40342

KWWOA STATE BOARD

David Goodrum, Chairman
goodrum@scrtc.com

Robin Strader, Vice-Chairwoman
rdstrader@windstream.net

Lori Simpson, Secretary
simpson@nkywater.org

Julie Duncan, Treasurer
watergirl@kih.net

Brian Bourne, Rep., NCKWWOA
BBourne@fewpb.com

Stewart North, Rep., NCKWWOA
sanorth@sourcetechnologiesllc.com

Lloyd Keyser Rep., EKWWOA
lloydkeyserosite@yahoo.com

Roy Gray, Rep., EKWWOA
manchesterwtp@yahoo.com

Jacob Billingsley, Rep., CKWWOA
jbillingsley@glasgowh2o.com

Shaun Youravich, Rep., CKWWOA
youravich@hardincountywater2.org

Alan Todd, Rep., WKWWOA
atodd@madisonvillegov.com

Chris Spriggs, Rep., WKWWOA
cspriggs@madisonvillegov.com



For information, comments or
questions regarding KWWOA or
this newsletter, contact:

Member Services Director:
Lisa B. Detherage

Mailing Address:

KWWOA
P.O. Box 700
Lawrenceburg, KY 40342

Phone Number: 502-352-0510

New KWWOA Email Address:
info@kwwoa.org

Website: www.kwwoa.org

KWWOA
P. O. Box 700
Lawrenceburg, KY 40342

HALL ENVIRONMENTAL CONSULTANTS, LLC

MUNICIPAL

- Pretreatment Program Administration
- Wastewater Ordinance Development
- KPDES Permitting
- Sampling & Analysis
- Wastewater Operations Consulting
- DMR Reporting
- FOG Program Development & Administration
- Local Industrial Limits Evaluation
- GIS Mapping of Sewer Systems
- Landfarm Permitting & Reporting
- Regulatory Assistance
- Drinking Water Operations Consulting
- Consumer Confidence Reports

INDUSTRIAL

- Storm Water Permitting, BMPs, & Monitoring
- Groundwater Protection Plans
- Groundwater Investigations & Remediation Systems
- Groundwater Monitoring
- Pretreatment Sampling & Analysis
- Industrial Pretreatment Compliance Consulting
- Wastewater Treatment System Consulting
- Hazardous Waste Management
- Toxic Release Inventory Reporting
- SPCC Development
- Flowmeter Installation, Monitoring, & Calibration
- Environmental Studies
- Environmental Phase I & II

PLEASE CONTACT RANDY SHELLEY OR
CYNTHIA LEASOR FOR ASSISTANCE.

1376 DANVILLE ROAD + LOOP 1 + NICHOLASVILLE, KY 40356 + PH: (859) 885-3331 + FAX: (859) 885-4613 + EMAIL: HALLENV@QX.NET